

BIO-80-028

Corner Bioethanol Fireplace (Left)



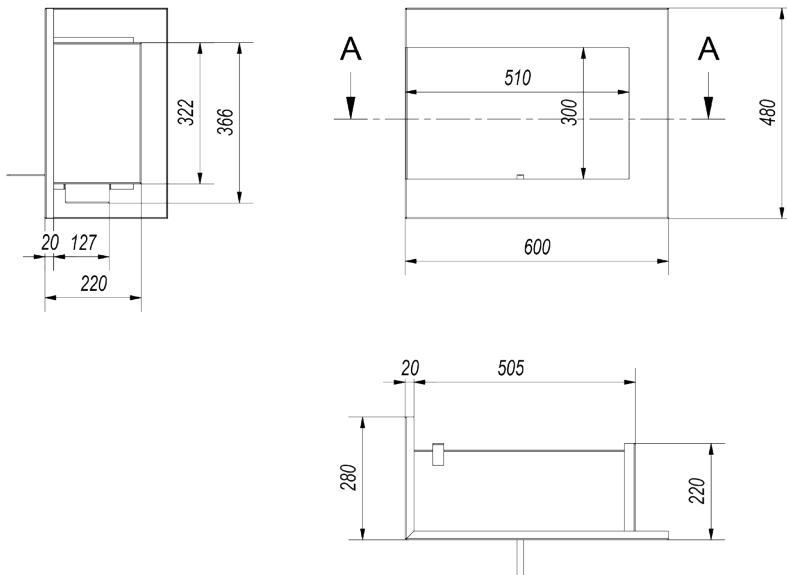
Picture



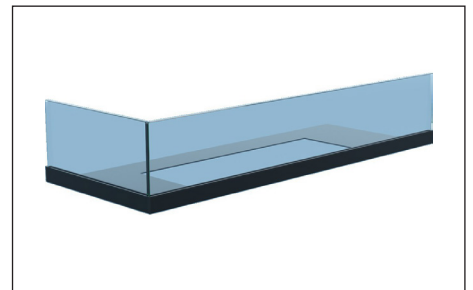
Technical Specifications

Fireplace type	Built-in bioethanol fireplace
Fuel	Bioethanol, max. 96.6% alcohol
Weight	11 kg
Materials	Painted Steel
Size	Height: 480 x Width: 600 x Depth: 280 mm
Colour	Black
Burner type	Manual
Capacity	1.2 liters
Adjustable flame	Yes
Burn time	Up to 3 hours
Requires electricity	No
Heat effect	2.17 kW/h

Technical Drawing



Additional Options



Glass for corner bioethanol fireplace
- 600 mm left